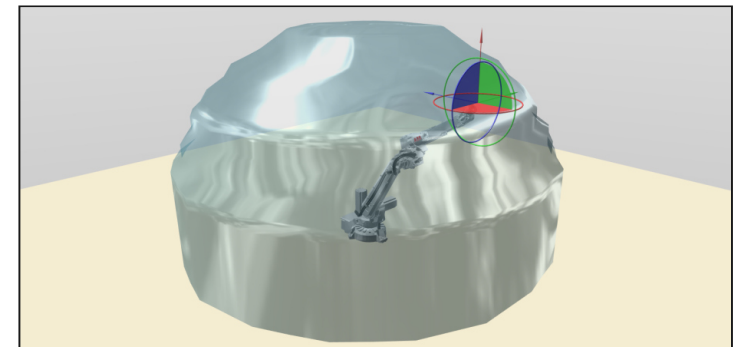
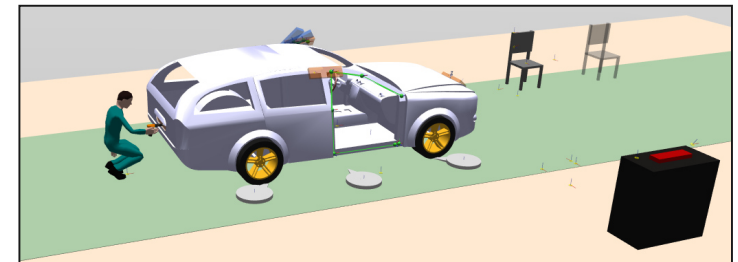
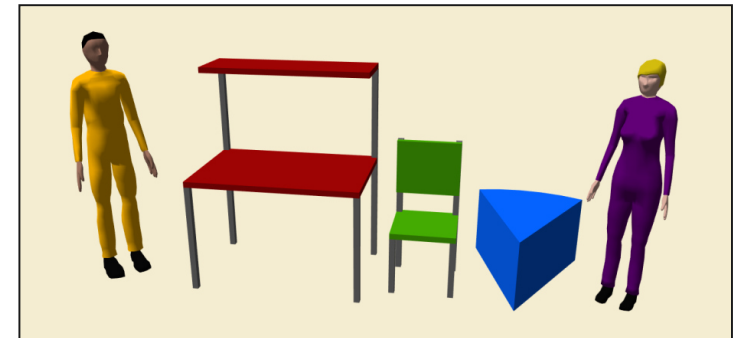


- support for **JT10** file format
- **Drag & Drop of project & geometric files** into main window enabled
- new task “**push / pull**”
- support for **dynamic moving targets** in simulations
- base functionality for **manikin collision prevention**
- **manikin color** can be changed
- selectable **initial postures** for manikins
- **Reach space object** creation for kinematic chains
- **motion data recorder** & export functionality
- new geometric primitive “**chair**”
- enhanced geometric primitives “**cylinder**” & “**table**”
- added new “**layout helper**” functions for **interactive & direct IK chain manipulation**
- **extended robot library**



- [Core] task parameter "headrest available" added for tasks "sit down" & "get into vehicle"
- [Core] task parameter "reference object" added for task "check / read"
- [Core] task "smear on surface" new pattern of smearing with corrected "move distance per cycle [m]"
- [Core] task parameter "use left hand" added for tasks "screwing together" and "clipping"
- [Core] availability and currentness of simulation data is now checked on playback play button
- [Core] main menu item "file" splitted into "file" and "im-/export"
- [Core] added use case samples for "layout helper" tool tips
- [Core] new function "hide all helper objects (GP, TCP, WP ...)" added to "objects" tab
- [Core] object context menu item "Transformation => select end effector" added
- [Core] object context menu item "Manikin" added
- [Core] behavior context menu item "configure manikin" added
- [Core] scaling repair functionality added (object context menu)
- [Core] "task filter management" enhanced with additional parameter for specification of global frequency (for reporting purposes)
- [Core] implemented various keyboard short cuts for mainmenu commands (load, save, ...)

[Core] camera position is now stored & restored during saving / loading

[Core] new layout mode (global coordinate system)

[Core] added "file object modification report" in objects tab

[Core] navigation crosshair can be toggled on/off via F11 key

[Core] added parameter "leg color" for "table"

[Core] screenshots are now stored in JPEG format

[Ergo] load distance / duration type limitations can now be configured via "settings -> EAWS"

initial IK configuration no longer influences IK results

issue in EAWS push/pull aggregation solved

various stability fixes for CAD data loading

behavior of mouse wheel zoom (in 3D view) fixed

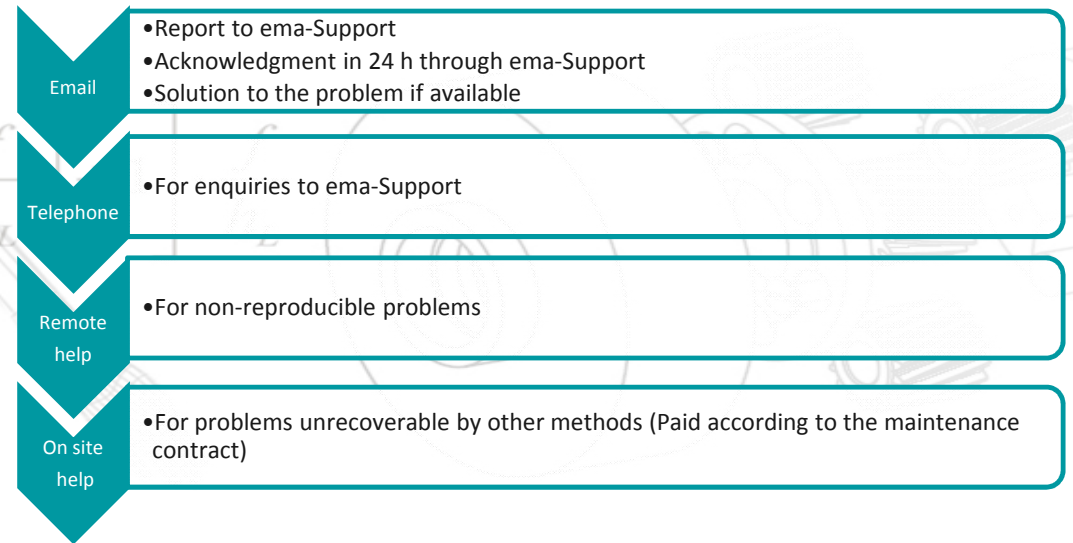
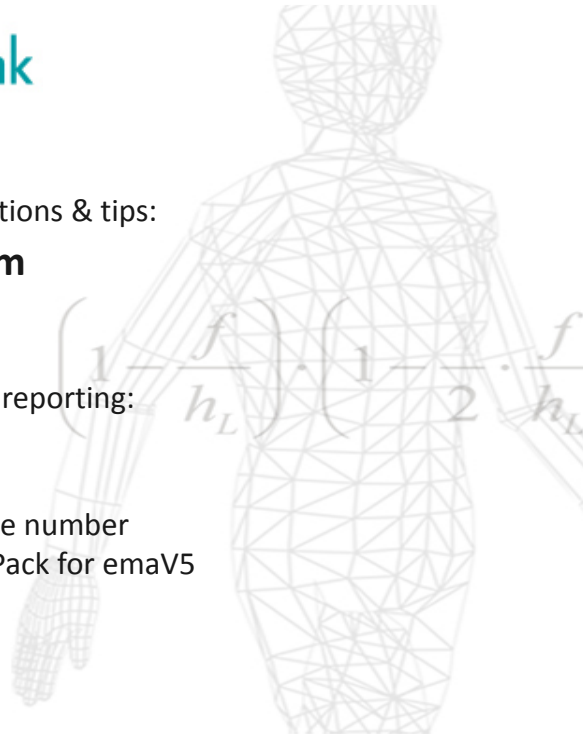


Contact address for errors, questions & tips:

support@imk-ema.com

Necessary information for error reporting:

- Customer number
- ema-Release number
- Contact person/ Telephone number
- DELMIA Release, Service Pack for emaV5
- Detailed Error description
- If possible sample data



imk ema, LLC

Contact - Germany

Gerson Heuwieser
Mobile: +49-172-765-1966
Gerson.Heuwieser@imk-ema.com

Contact - Worldwide

Uwe Knorr
Mobile: +1-503-780-2291
Uwe.Knorr@imk-ema.com